



### Overview:

Every department should have at least one heavy duty couch which will safely lift and position both large and heavy patients to the required height for examination procedures. The bariatric 3 section provides effortless push button operation and features a wide treatment surface with a safe working load and lifting capacity of 320kgs (50 stone). The standard upholstery can be upgraded to deeper foam with pressure relieving properties and 2-way multi-stretch vinyl for additional patient comfort.



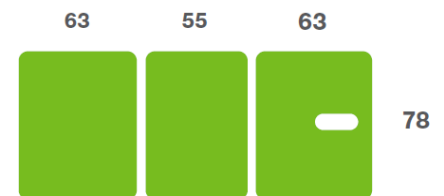
### Benefits

- Lifetime frame & 5 year parts guarantee - see website for further details
- Substantial treatment surface to support both large and heavy patients
- Push button electric operation of height, backrest and foot section angles
- The electric backrest has angular adjustment from horizontal to +85° for sitting procedures
- Safe working load and lifting capacity of 320kg (704lb / 50 stone) to cater for heavy load requirements
- The electric foot section provides a "knee break" position for sitting of -25°, adjustable up to 85°
- Retractable wheel system for moving and positioning of the couch
- Low patient transfer height of 49cm (approx 19")
- Breathing hole and plug for prone treatment

### Overall Dimensions

Length: 183cm approx (72") approx  
 Width: 78cm (31") approx  
 Height: 49cm - 98cm approx (19" - 39") approx

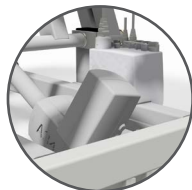
### Upholstery Dimensions



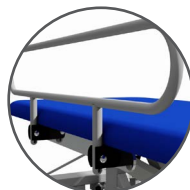
### Options & Accessories:



Pressure Relieving Foam



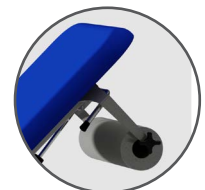
Battery Back-up



Fold-down Side Support Rails

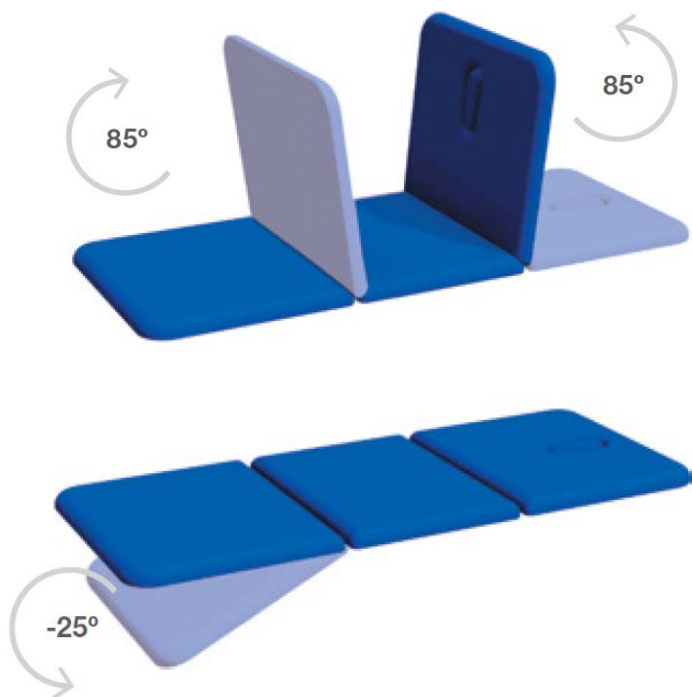


Foot Switch Operation



Paper Roll Holder

## Operational Parameters



Model 50 3 section - Electric Version

## Standard Features

- UK Manufactured
- Lifetime frame & 5 year parts guarantee
- 16 year average lifespan
- Electric operation
- Comfort foam
- Easy operation
- Low running costs
- Hardwearing anti-microbial vinyl
- Safe working load 320kg
- Retractable castors
- Hoist clearance 140mm
- Motorised backrest and foot section
- Breathing hole

## Technical Standards

- IP Rating - IPx4
- EEC Classification - MDD93/42/EEC Annex IX Class 1
- Electrical Standard - IEC601 Part 1 + 60601. P (EN)
- Vinyl Flame Retardant to CRIB 5 (BS 7176)
- Foam to BS 5852: Part 2: 1982, Ignition Source 5 [CRIB 5]
- CE Marked
- Externally audited to ISO9001:2015 by LRQA

## Delivery Promise

- Delivery to UK mainland in just 7-10 working days
- Faster service may be available if required
- Overseas delivery 7-10 days plus shipping time

## Upholstery Vinyl

- Flame retardant to BS 5852 Ignition Source 5 - CRIB 5 (BS 7176) Medium Hazard
- Independently tested to verify effectiveness at reducing the spread of MRSA, E.coli & other similar bacteria & fungi
- Rated at 500,000 Martindale rubs without damaging or marking the top layer, making it suitable for all high-traffic, heavy-duty areas
- Phthalate free
- Please note: If the upholstery colour is not specified, 'Almond' will be supplied

