



Overview:

The G2 model features electric operation of height and Trendelenburg tilt facilities for improved patient positioning for gynaecology and colposcopy procedures. The couch has a seat section with a cut-out area for gynaecology procedures and the option of a removable seat extension which increases the overall length of the couch for patient positioning. The manual backrest can be instantly lowered to -15° head down to aid patient recovery in the event of fainting or light-headedness. Standard accessories include the matching head cushion, height adjustable armrests, leg supports, and removable debris tray.



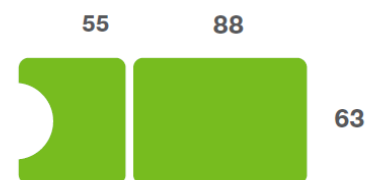
Benefits

- Lifetime frame & 5 year parts guarantee - see website for further details
- Electric operation of height and Trendelenburg tilt facility for improved patient positioning
- Adjustable angle backrest with instant lowering to -15° to aid patient recovery
- Seat section with cut-out and option of extension for patient recovery
- Leg supports with both height adjustment and multi-angular positioning
- Height adjustable arm supports for patient comfort and security
- Matching head cushion for patient comfort
- Safe working load of 250kgs (550lb / 39 stone)
- Retractable wheels provide easy movement and positioning of the couch
- Low patient transfer height of 52cm (20")
- Wide choice of options, width and accessories to meet user requirements

Overall Dimensions

Length: 144cm (57") approx
with seat extension 180cm (71")
Width: 63cm (25") approx
Height: 52cm - 101cm approx
(20" - 40") approx

Upholstery Dimensions



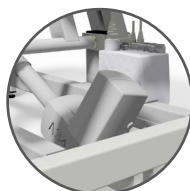
Options & Accessories:



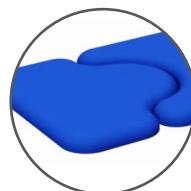
Classic Operators Chair



Foot Switch Operation



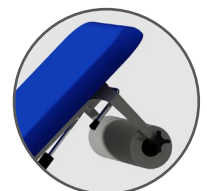
Battery Back-up



Seat Extension



Motorised Backrest



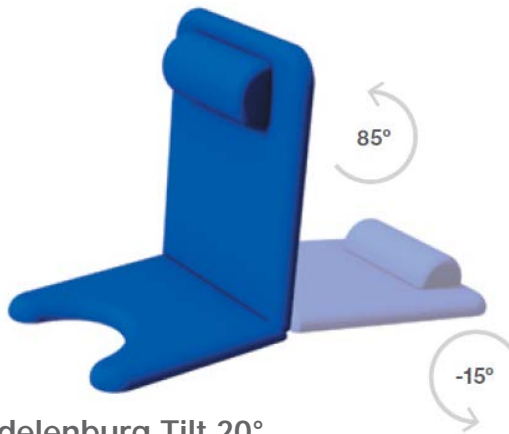
Paper Roll Holder

NHS Approved Supplier



t: +44 (0)1449 767887
e: sales@plinthmedical.com
www.plinthmedical.com

Operational Parameters



Trendelenburg Tilt 20°



0°

Model 93G2 - Electric Version

Standard Features

- Designed and manufactured in the UK
- Lifetime frame & 5 year parts guarantee
- 16 year average lifespan
- Electric operation with Trendelenburg tilt
- Comfort foam
- Easy operation
- Low running costs
- Hardwearing anti-microbial vinyl
- Safe working load 250kg
- Retractable castors
- Hoist clearance 130mm
- Leg supports
- Arm loops
- Head cushion
- Stainless tray
- Gas spring operated backrest

Technical Standards

- IP Rating - IPx4
- EEC Classification - MDD93/42/EEC Annex IX Class 1
- Electrical Standard - IEC601 Part 1 + 60601 P (EN)
- Vinyl Flame Retardant to CRIB 5 (BS 7176)
- Foam to BS 5852: Part 2: 1982, Ignition Source 5 [CRIB 5]
- CE Marked
- Externally audited to ISO9001:2015 by LRQA

Delivery Promise

- Delivery to UK mainland in just 7-10 working days
- Faster service may be available if required
- Overseas delivery 7-10 days plus shipping time

Upholstery Vinyl

- Flame retardant to BS 5852 Ignition Source 5 - CRIB 5 (BS 7176) Medium Hazard
- Independently tested to verify effectiveness at reducing the spread of MRSA, E.coli & other similar bacteria & fungi
- Rated at 500,000 Martindale rubs without damaging or marking the top layer, making it suitable for all high-traffic, heavy-duty areas
- Phthalate free
- Please note: If the upholstery colour is not specified, 'Almond' will be supplied



Jasmine



Battleship



Cobalt



Cocoa



Grape



Mulled Wine



Pillarbox



Gingersnap



Candy



Applemint



Sapphire



Atlantic Blue



Lupin



Denim



Cool Blue



Rainforest



Wasabi



Citrus Green



Marigold



Almond

Plinth Medical Ltd
Barric Lane
Occold, Eye
Suffolk, United Kingdom
IP23 7PX

t: +44 (0)1449767887
e: sales@plinthmedical.com
www.plinthmedical.com

Plinth | Medical