



Overview:

The entry level G1 model features a choice of hydraulic or electric height operation and has a manually adjustable backrest and a seat section with cut-out area for gynaecology procedures. The option of a removable extension increases the overall length of the couch for patient positioning. The backrest can be instantly lowered to -15° head down to aid patient recovery in the event of fainting or light-headedness. Standard accessories include the matching head cushion, height adjustable armrests, leg supports, and removable debris tray.



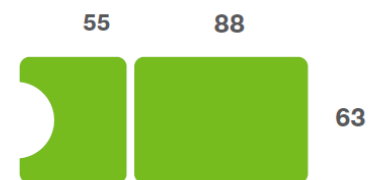
Benefits

- Lifetime frame & 5 year parts guarantee - see the website for further details
- Option of electric or hydraulic height operation
- Adjustable angle backrest with instant lowering to -15° to aid patient recovery
- Seat section with cut-out and option of extension for patient recovery
- Leg supports with both height adjustment and multi-angular positioning
- Height adjustable arm supports for patient comfort and security
- Matching head cushion for patient comfort
- Safe working load of 250kgs (550lb / 39 stone)
- Retractable wheels provide easy movement and positioning of the couch
- Low patient transfer height of 52cm (20")
- Wide choice of options, width and accessories to meet user requirements

Overall Dimensions

Length: 144cm (57") approx
with seat extension 180cm (71")
Width: 63cm (25") approx
Height: 52cm - 101cm approx
(20" - 40") approx

Upholstery Dimensions



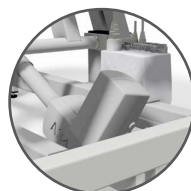
Options & Accessories:



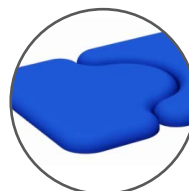
Classic Operators Chair



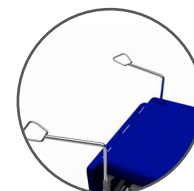
Foot Switch Operation



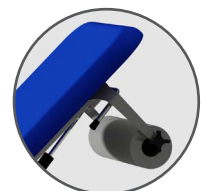
Battery Back-up



Seat Extension



Lithotomy Stirrups



Paper Roll Holder

NHS Approved Supplier



t: +44 (0)1449 767887
e: sales@plinthmedical.com
www.plinthmedical.com

Operational Parameters



Model 93G1E - Electric Version

Model 93G1H - Hydraulic Version

Standard Features

- Designed and manufactured in the UK
- Lifetime frame & 5 year parts guarantee
- 16 year average lifespan
- Electric or hydraulic height operation
- Comfort foam
- Easy operation
- Low running costs
- Hardwearing anti-microbial vinyl
- Safe working load 250kg
- Retractable castors
- Hoist clearance 130mm
- Leg supports
- Arm loops
- Head cushion
- Stainless tray
- Gas spring operated backrest

Technical Standards

- IP Rating - IPx4
- EEC Classification - MDD93/42/EEC Annex IX Class 1
- Electrical Standard - IEC601 Part 1 + 60601 P (EN)
- Vinyl Flame Retardant to CRIB 5 (BS 7176)
- Foam to BS 5852: Part 2: 1982, Ignition Source 5 [CRIB 5]
- CE Marked
- Externally audited to ISO9001:2015 by LRQA

Delivery Promise

- Delivery to UK mainland in just 7-10 working days
- Faster service may be available if required
- Overseas delivery 7-10 days plus shipping time

Upholstery Vinyl

- Flame retardant to BS 5852 Ignition Source 5 - CRIB 5 (BS 7176) Medium Hazard
- Independently tested to verify effectiveness at reducing the spread of MRSA, E.coli & other similar bacteria & fungi
- Rated at 500,000 Martindale rubs without damaging or marking the top layer, making it suitable for all high-traffic, heavy-duty areas
- Phthalate free
- Please note: If the upholstery colour is not specified, 'Almond' will be supplied



Jasmine



Battleship



Cobalt



Cocoa



Grape



Mulled Wine



Pillarbox



Gingersnap



Candy



Applemint



Sapphire



Atlantic Blue



Lupin



Denim



Cool Blue



Rainforest



Wasabi



Citrus Green



Marigold



Almond

Plinth Medical Ltd
Barric Lane
Occold, Eye
Suffolk, United Kingdom
IP23 7PX

t: +44 (0)1449767887
e: sales@plinthmedical.com
www.plinthmedical.com

Plinth | Medical