

Plinth | Medical



Neurology 'Bobath' Couch

Model: 40MT

USER MANUAL

Contents

1. Introduction	3
General Warnings	3
2. Installation	4
Retractable Castors	4
Adjustable Foot	4
Power Supply	5
Lifting and Moving	5
3. General Operation	6
Electric Operation	6
Castor Operation	7
4. Accessories Operation	7
Battery Backup	7
Fold Down Cot Sides	8
Footswitch	8
5. Cleaning and Decontamination	9
6. Troubleshooting	10
7. Maintenance	11
8. Guarantee and Service	12
9. Technical Specification	13
10. Revisions to Manual	14

Plinth Medical Ltd is an ISO Audited company to ISO9001:2008



Our products are CE marked in conformity with the EC Directive MDD 93/42/EEC

1. Introduction

Thank you for purchasing a product from Plinth Medical Ltd. We use the highest quality components and manufacturing techniques to ensure that our products are simple to use and will last a long time. It is recommended that all users read and retain this User Manual for reference.

Throughout this manual notice is made of a Warning and Caution system to highlight to the user practices, procedures or conditions that should either not be allowed to happen or happen with caution.

Warnings are in a box with bold type and identify potential hazards, procedures or conditions which could result in death, injury or serious damage.

Cautions are in a box with plain type and identify conditions or procedures where if caution is not taken it may result in damage or failure of equipment.

General Warnings

WARNING

Maximum Load (SWL) is 320kg distributed evenly.

Do not use flammable gasses in proximity to an electrically operated couch.

Do not concentrate weight on either side or either end of the couch.

Use only accessories approved for use with this couch.

Disconnect power supply before moving couch.

Children must be adequately supervised in the presence of the couch.

Do not allow children to play with the couch at any time.

2. Installation

Although this couch comes complete and is virtually ready to use it is important to remove all packaging and read the following before use.

Retractable Castors

The castors can be operated from either side of either end of the couch. Press the pedal down to engage the castors and lift the pedal to retract the castors.

Please refer to the Operation section on page 7 for further details.

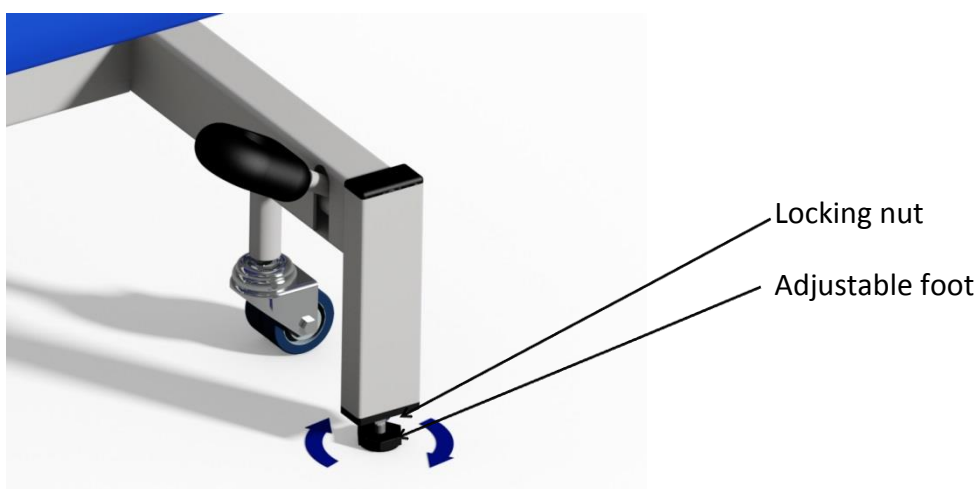
WARNING

Castors must be retracted before the couch is used and whilst patients get on or off the couch.

Care should be taken to ensure patients do not trip over any part of the couch when getting off.

Adjustable Foot

Fitted to the head end of the couch is an adjustable foot. This is designed to stabilise the couch and must be set before use. The foot should be wound in/out until it is firmly in contact with the floor whilst the castors are retracted. Check that the couch is firm and stable and then adjust the lock nut back up against the couch leg to lock the adjustable foot in position. Incorrect adjustment will result in the couch being unstable and the wheel pedals difficult to operate.



Power Supply

Ensure that hand or foot switch leads are clear of the moving parts of the couch before operation. Connect the couch to a normal domestic type power supply observing the following notes.

WARNING

Ensure that the mains lead, plug and socket are in good condition before connecting the equipment.

Ensure that the mains cable has a clear run and is not stretched when connected and that no one can fall over the cable.

CAUTION

When couch is not in use switch off power supply.

Lifting and Moving

Should the couch need to be moved or lifted (for example to remove it from its packaging) then a minimum of four people are required. The couch must only be lifted by the metal base frame near the wheels. If the couch is upside down then it may be carried by holding it underneath the upholstery. When turning the couch over, please make sure the frame and upholstery are supported at all times, otherwise damage may occur to the upholstery and gas springs.

CAUTION

Under no circumstances lift the couch by the upholstery or top sections as damage will occur to the gas spring mechanisms.

3. Operation

Plinth Medical offers 1 model of Neurology 'Bobath' Couch which is also able to handle Bariatric patients.

Electrical Operation General

WARNING

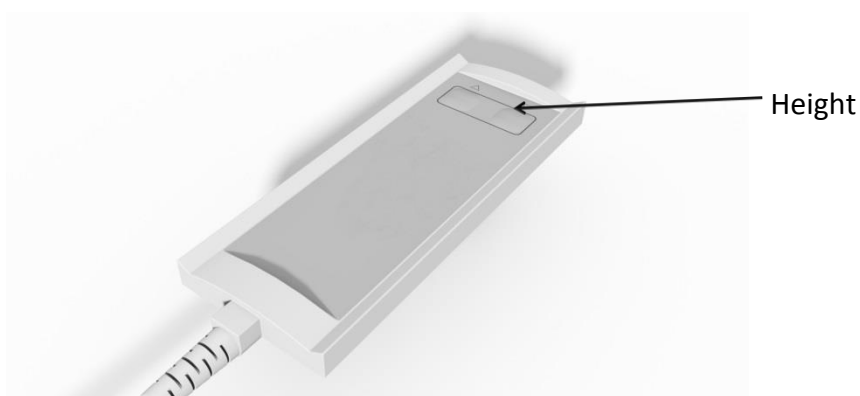
Safely position patient before operating any functions.

Position the switch in a place where it is clear of the moving parts of the couch and where accidental operation is not possible.

Ensure that all electrical cables are clear of the moving parts of the couch.

Electrical Operation (hand)

A standard fitment to the Neurology Couch is a single hand control able to operate all electrical functions.



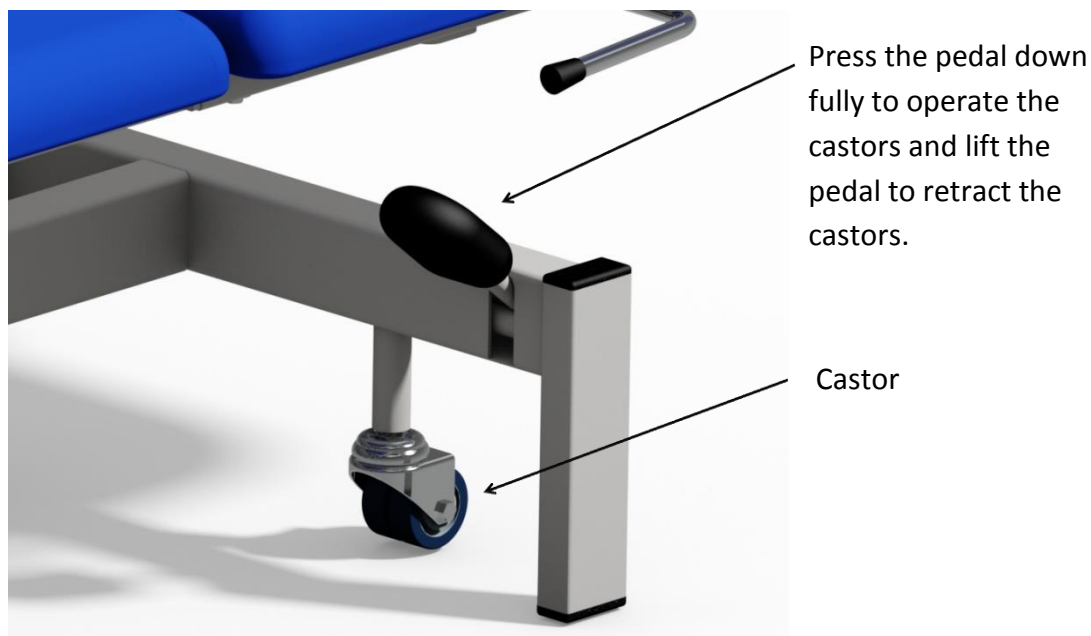
Electrical Operation (foot)

As an option this couch may be supplied with a foot switch to operate the electrical functions. It will operate in the same way as the hand switch but must be placed on the floor and operated by foot.

Retractable Castor Operation

The castors fitted to this couch are 50mm retractable swivel castors. They are operated in pairs at each end of the couch via the black wheel pedals.

NOTE – the castors are not designed for patient transport.



WARNING

Castors must be retracted before the couch is used and whilst patients get on or off.

Disconnect and coil electrical leads and switch away from the couch mechanism prior to moving the couch.

4. Accessories Operation

A range of accessories are available as options to expand the use of the couch. The standard recommended accessories are detailed below. Many of these can be fitted retrospectively if required.

Battery Backup

Battery backup is a useful option in case of power shortages. It allows at least one full cycle under battery power to enable the patient to get off the couch. If specified with the couch then this feature will remain automatically charged and ready for use in the event of a power failure.

CAUTION

Do not use the battery to operate the couch other than for one cycle. This feature is designed to get a patient off the couch in an emergency and frequent use will destroy the battery.

Battery operation is available as an option if required.

Fold Down Cot Sides

Fold down cot sides are available as an option. They are operated as follows:



To raise the cot side from the down position; lift and rotate the cot side towards you through a full 180°. When upright push the cot side down into the plastic block until it is fully located.

To lower the cot side from the upright position; lift up in the plastic block and then rotate a full 180° into the down position.

WARNING

Ensure that the cot side is fully engaged in the plastic block whilst in use.

Footswitch



An optional fitment footswitch may be specified for the couch and will look similar to the one pictured below. Note that the switch will vary depending on the number of motors fitted.

← Height (up/down)

5. Cleaning and Decontamination

WARNING

If contamination is suspected then decontaminate the couch before use.

Torn or damaged upholstery should be replaced immediately.

CAUTION

Do not use Alkalis or other organic solvents for routine cleaning.

Always cover the vinyl with paper towelling or couch covers if it can come into contact with bare skin.

Cleaning

Always wear suitable protective clothing before carrying out this procedure.

Disconnect the mains supply to the couch and move it to a suitable cleaning area and lock the castors.

Step 1. Using warm water and soap on a damp cloth, carefully wipe the couch over from top to bottom. Take great care around electrical components.

Step 2. Wipe the couch carefully from top to bottom using a clean damp cloth and soap free water.

Step 3. Carefully dry the couch from top to bottom with clean lint free paper towels.

Decontamination

To decontaminate the couch repeat the above steps but using a dilute solution of Hypochlorite and warm water (10,000ppm) instead of warm water and soap. At the end of the procedure discard all cleaning materials in a safe manner and wash hands thoroughly.

6. Troubleshooting

In the unlikely event of the couch failing to operate and having carried out the normal practical fault finding steps below then please contact our Customer Service Team on +44 (0)1449 767887 or email customerservice@plinthMedical.com. **Please have the serial number to hand before making contact so we can help you more efficiently.**

Fault	Possible Cause	Remedy
Couch is unstable	Uneven floor	Move couch to flat floor
	Adjustable foot	Check presence, condition and adjustment of foot
Lift motors will not work	Power disconnected	Connect power supply
	Fuse Blown	Replace fuse in plug
	Hand/ Footswitch disconnected	Check the switch is fully connected to the motor
Motor sinks	Switch permanently operated	Unplug and re-connect switch
	Motor fault	Replace motor

7. Maintenance

Plinth Medical Ltd products are designed to be maintenance free. However keeping your Plinth products clean and regularly checked will assist in prolonging their working life. The following is a guide of simple checks that the user can carry out on a six monthly basis. We would also recommend an annual service visit by a Plinth Medical trained engineer.

WARNING

Disconnect couch from electrical supply before commencing any of the following checks.

Examine the couch for any signs of damage. Pay particular attention to all nuts, bolts and fasteners to check they are present and tight but not over tight.

Upholstery bolts should all be checked (each section has between 2 and 6 No. M6 bolts), they should all be present and tight.

Check gas struts (if fitted) and ensure that they operate through the full range of movement and lock fully.

Check hinge pins are lubricated and not rusty.

Check main couch nylon pivot bearings are lubricated sufficiently.

Examine mains and switch cables for any damage, cuts, kinks, abrasions etc. These must be replaced if necessary.

Check mains lead, switch cables and slave motor leads are all correctly and securely attached.

Check correct plug fuse is fitted (5A).

WARNING

Any electrical checks or work other than the visual inspection above must be performed by a qualified electrician.

Do not connect BLUE or BROWN wires to the earth terminal of a plug.

8. Guarantee and Service (UK only)

Plinth Medical Ltd offer a 5 year parts guarantee on all Premium Range products delivered from January 2013 and a lifetime frame guarantee. The only exclusion to this guarantee is for negligent damage or damage to upholstery coverings. This guarantee does not require registration of the product as we can trace it from its serial number, however in the event of the serial number being removed, missing or unreadable then this may void the guarantee. These terms do not affect your statutory rights.

In addition to the above Plinth Medical Ltd can offer both extended warranties and service contracts. For further information about either of these please contact:

Customer Service
Plinth Medical
Barric Lane
Occold
Eye
Suffolk
IP23 7PX
Tel: 01449 767887
Mail: customerservice@plinthMedical.com

In the event of returning a product or part to us then please follow the instructions for cleaning under section 5 before enclosing it in suitable packaging and returning it to the above address. In addition please ensure there is a statement confirming that it has been decontaminated and what the fault is along with relevant contact details.

Worldwide

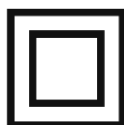
Please contact the distributor you purchased the couch from for service and support in your country. If you are unable to do so then please contact us in the UK and we will refer you to our local representative.

9. Technical Specifications

	40E
Head Length (cm)	63
Seat Length (cm)	124
Width (cm)	102
Overall Length (cm)	189
Height Range (cm)	41-91
Max Working Load	320kg
Control	Hand switch
240V	
Motor(s)	Linak LA34 x 1
Linak CB09	Linak CB09
Current	1.5A
Power	360W
Mains Plug Fuse	5.0A x 1
Internal Fuse	1.5A x 1
System Voltage	24v
IP Rating	IPX4
110V	
Motor(s)	Linak LA34 x 1
Control Box	Linak CB09
Current	2.7A
Power	360W
Mains Plug Fuse	5.0A x 1
Internal Fuse	3.0A x 1
System Voltage	24v
IP Rating	IPX4

IEC 601-1 Electrical Safety Classification

All models are double insulated Type B equipment and marked as such.



Double Insulated



Type B Equipment

10.Revisions to Manual

Pages	Issue No	Name	Date
All	Manual – 01	Martin Lankester	23.11.16

Plinth Medical
Barric Lane
Occold
Eye
Suffolk
IP23 7PX
ENGLAND

Plinth Medical Ltd in association with Plinth 2000 are an ISO Audited company to
ISO9001:2008



Our products are CE marked in conformity with the EC Directive MDD 93/42/EEC